



68" ESTATE FIBERGLASS DOOR | WHISTLER DOORGLASS

DISCOVER THE NEW URBAN FRAME

Where robust design meets refined style. Engineered for the exceptional quality you come to expect from our brand.

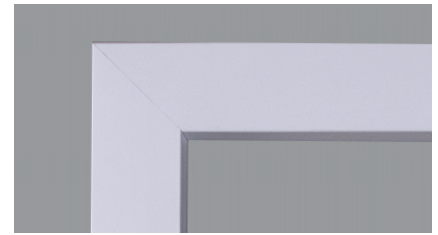


Newly designed interior cover cap

- **Streamlined Aesthetic:** New innovative interior cover cap design offers a sleek appearance by concealing screw heads and eliminates the need to use screw plugs.
- **Low Profile Design:** Adds a modern touch to urban-style doors and homes, enhancing the overall aesthetic appeal.
- **Premium Interior PVC Construction:** Crafted for superior strength.
- **Durable PVC Exterior Frame:** Perfect for Versatile Applications.
- **UV Resistant:** Engineered to guard against fading and degradation from sunlight, ensuring long-lasting beauty.
- **Customizable Sizing:** Available in both standard and custom sizes to accommodate all doorglass dimensions, including 1" overall IG units.
- **Frame Finishing Overview:** CAUTION - Painting this frame a dark colour can cause heat damage not covered by the warranty.

ADDITIONAL FEATURES:

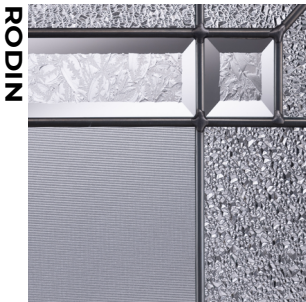
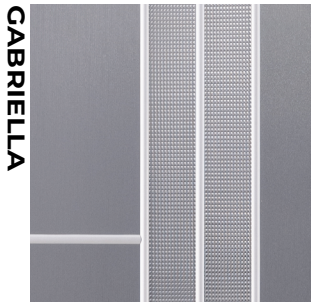
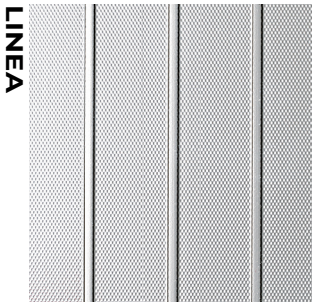
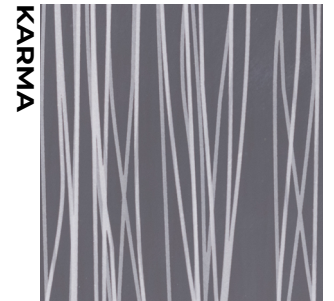
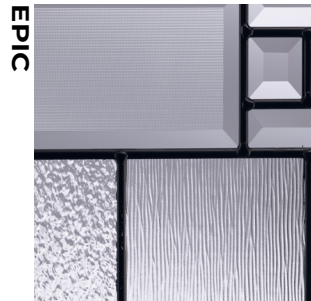
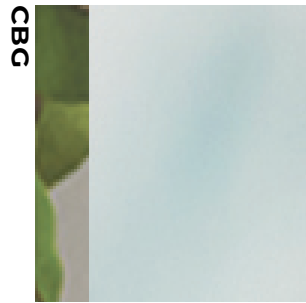
- **Precision Mitered Corners:** Corners provide superior stability and strength for lasting performance.
- **Seamless Finish:** Dry-fit seal design ensures a polished look without the need for caulking.



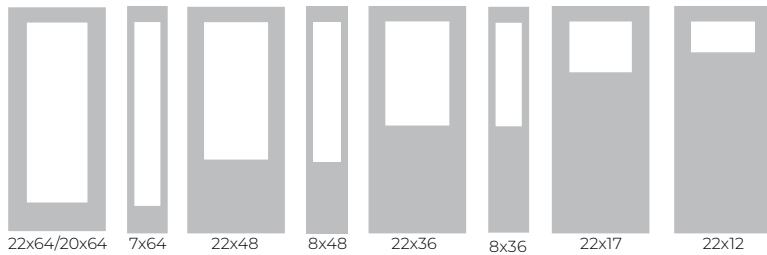
PVC Exterior Frame

AVAILABLE GLASS OPTIONS:

Explore our diverse range of doorglass options below that are available with the Urban Frame. They are designed to enhance your home's modern aesthetic, while providing the privacy and style that you are looking for. Visit our full line catalogue and uncover our beautiful doorglass designs.



AVAILABLE SIZES



* Custom Sizes Available



canada.odl.com
1.800.253.3900