



**KEYSTONE**  
IMPACT RATED FRAME



MR. HUFF  
AND PUFF  
HAS MET  
**HIS MATCH**

Provide peace of mind with the essential support  
of the Keystone impact rated frame.

[odl.com/keystone](http://odl.com/keystone)

# WHY CHOOSE THE KEYSTONE IMPACT RATED FRAME?

Our vision at ODL is to lead the industry in doorlight frames for innovation, design and performance—solving problems others won't. We have done that with Keystone, which was engineered to use a lightweight, composite material without sacrificing performance. [Learn more at odl.com/keystone](https://odl.com/keystone)

- **IMPACT RATED**

Design pressure rating of 60 PSF

- **CO-EXTRUDED SEAL**

Stops debris from collecting between the frame and glass, keeps paint from seeping

- **STRUCTURAL SEALANT**

Dow 995 is pre-applied. Structural tape is pre-applied to frame, backing must be removed before installation

- **FRAME & IG ALIGNMENT**

H-Channel design to allow for seamless installation

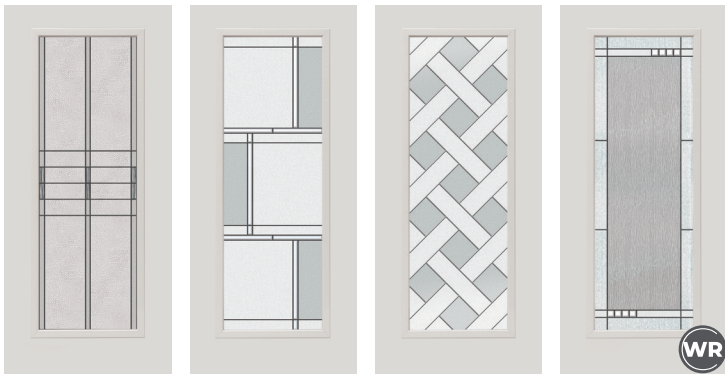
- **COMPATIBLE PROFILE**

Matches existing aluminum frame profile to allow a single unit replacement, external SDL bars can be applied

## FEATURED IMPACT DOORGLASS

Keystone is available with a large selection of impact rated doorglass. Below are some of our newest camed and high-privacy designs, but there are many more available. Visit [odl.com/catalog](https://odl.com/catalog) for more details.

### CAMED DOORGLASS DESIGNS



BAY POINT

VILANO

MARGATE

EDGEWOOD  
(Part of the  
Western Reflections  
Collection)

### NEW LIGHTSCAPES DESIGNS



CYNDI

FRAGRANCE

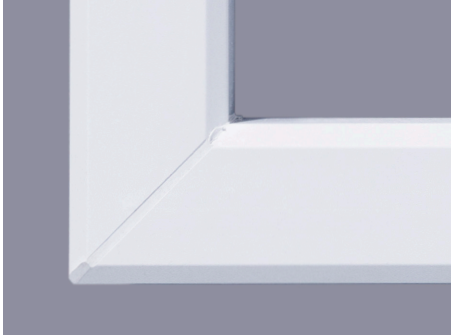
KARMA



VILANO DOORGLASS

# KEYSTONE SOLVES PROBLEMS!

## MATERIAL



**Problem:** Aluminum is heavy, not easily paintable, and the powder coat can bubble

**Solution:** uPVC material is lighter, easier to finish and shipped with a protective film

## MITER CORNER AESTHETICS



**Problem:** Other frames can have gaps between the miters and corner offset

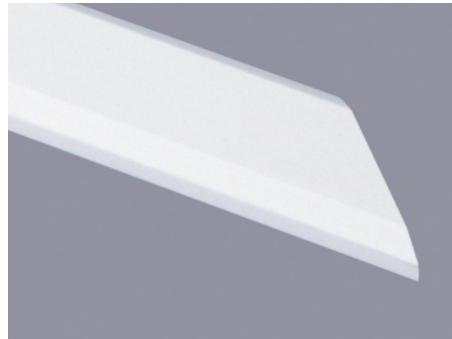
**Solution:** Welded corners and optimized cover cut length eliminate offset and minimize gaps



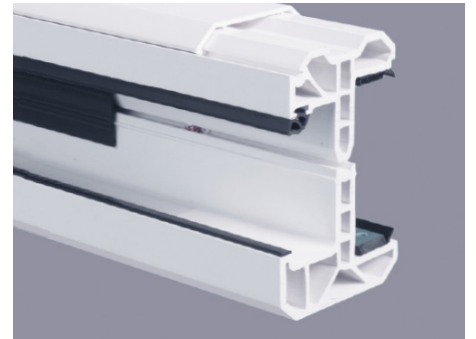
## SAY GOODBYE TO SCREW HOLE PLUGS: NEW FRAME COVERS!



INTERIOR



COVER CAP LINEAL



FRAME COVER

Screw hole plugs can be a necessary evil—they fill in the holes left by a screw frame, but they can be difficult to install correctly so they are flush with the frame, can be time consuming to install, and they can be hard to finish.

Keystone solves for this with frame covers that snap on over the frame. You only need to install 4 covers per frame regardless of size. The surface is flawlessly smooth, and if you decide to finish them it is a one step process.



CYNDI  
DOORGLASS

## DOOR DISPLAY

### SAVE 50% OFF

Order Impact Rated Doorglass with the Keystone frame for your showroom at 50% off!

\*door and display feet sold separately



BAY POINT



MARGATE



215 E ROOSEVELT AVE  
ZEELAND, MI 49464  
800.253.3900 · odl.com

224068 (03/24)